

LSG RAIL CURVE GREASE

PREMIUM FRICTION MODIFIER GREASE FOR RAIL CURVE LUBRICATION.

ENGINEERED FOR REDUCED RAIL & WHEEL WEAR, NOISE, AND ENERGY CONSUMPTION ON RAILWAY TRACKS.

PRODUCT DATA SHEET

LSG RAIL CURVE GREASE

Premium Friction Modifier Grease for Rail Curve Lubrication. Engineered for Reduced Rail & Wheel Wear, Noise, and Energy Consumption on Railway Tracks.

LONE STAR
GREASE & LUBRICANTS



PRODUCT DATA

LSG Rail Curve Grease is a premium performance rail curve grease specifically formulated for the rigorous demands of the railway industry.

A robust lithium thickener combined with a high-quality ISO VG 100 base oil and 3% of **Molybdenum Disulfide (Moly)** delivers superior protection against friction wear and provides excellent adhesion and protection for critical exposed rail applications.

Designed to address the challenges of rail curves, **LSG Rail Curve Grease** provides protection against metal-to-metal contact between the wheel flange and the gage face of the rail.

The **Molybdenum Disulfide** technology provides the needed boundary lubrication protection you need, preventing costly wear and extending the lifespan of both rail and wheel components.

Its stable consistency ensures reliable pumpability through trackside lubricators, even in varying ambient temperatures, while maintaining tenacious adhesion to the rail surface in the presence of heavy traffic, water, and environmental contaminants.



This grease is engineered to help reduce frictional wear, heat, and noise (squeal) on curves, contributing to improved energy efficiency for rolling stock and a quieter operating environment.

Its strong resistance to water washout and excellent corrosion protection safeguard vital infrastructure assets, making it an optimal choice for track maintenance programs focused on extended component life and reduced operational costs.

CUSTOMER BENEFITS

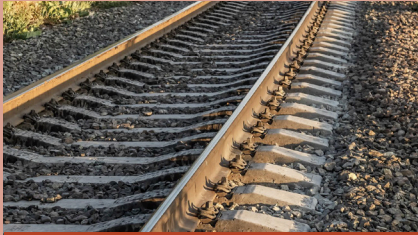
- ✓ **Reduces Rail & Wheel Wear:** Significantly extends the life of rail infrastructure and train wheels by providing superior friction modification and anti-wear properties.
- ✓ **Lowers Energy Consumption:** Reduces friction on curves, leading to improved fuel efficiency for locomotives and reduced power consumption for electric trains.
- ✓ **Minimizes Rail Squeal & Noise:** Effectively dampens noise on curves, improving rail noise and operational safety.
- ✓ **Extends Lubrication Intervals:** Exceptional adhesion and durability lead to less frequent reapplication, reducing labor and material costs.
- ✓ **Reliable Performance in All Weather:** Maintains consistency and effectiveness across a broad temperature range and in challenging wet or dusty conditions.
- ✓ **Reduces Maintenance Costs:** Fewer repairs, less rail grinding, and extended component life lead to significant savings for railway operators.

KEY FEATURES

-  **Lithium Thickener:** Provides excellent mechanical stability and good water resistance for exposed track applications.
-  **ISO VG 100 Mineral Base Oil:** Ensures robust film strength and wide operating temperature performance suitable for rail line conditions.
-  **3% Molybdenum Disulfide (Moly):** Delivers superior friction modification and extreme anti-wear protection, crucial for reducing wear on rail gage faces and wheel flanges.
-  **Exceptional Adhesion:** Formulated to stick tenaciously to rail surfaces, resisting displacement from wheel traffic, rain, and snow.
-  **NLGI No. 1 Consistency:** Offers excellent pumpability and flow characteristics for efficient delivery through automatic trackside lubricators and dispersion on the rail line.
-  **Outstanding Water Washout Resistance:** Provides critical protection against moisture, ensuring continuous lubrication even in wet conditions.
-  **Excellent Corrosion Protection:** Safeguards rail components against rust and corrosion, extending infrastructure life.

APPLICATIONS

LSG Rail Curve Grease is recommended for:



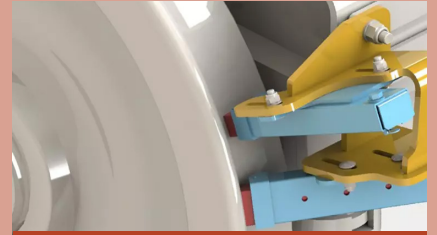
Rail Curve Lubrication:

Specifically designed for the lubrication of the gage face of the rail and the wheel flange interface.



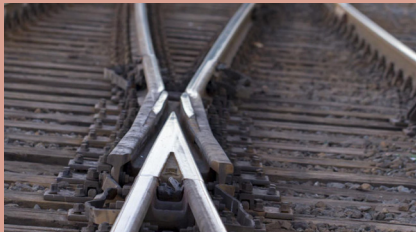
Trackside Lubricators:

Ideal for use in automatic and manual trackside grease applicators.



Wheel Flange Lubrication:

Effective for on-board wheel flange lubricators where a tenacious, friction-modifying grease is required.



Switches and Crossings:

Lubrication of various components in railway switches and crossings to ensure smooth operation and reduced wear.



Heavy Haul and Transit Lines:

Suitable for high-stress rail segments experiencing high loads and frequent traffic.

This grease is a premium performance rail curve grease specifically formulated for the rigorous demands of the railway industry.

PACKAGING



Cartridges
14 oz.



Pails
35 lbs.



Kegs
120 lbs.



Drums
400 lbs.

*Custom and Bulk Packaging available upon request.

TYPICAL PROPERTIES

Typical properties reflect the expected results within normal production tolerances but do not constitute a specification. Minor variations that do not impact product performance may occur during standard manufacturing processes or at different blending locations. The information provided here is subject to change without notice.

Property	Value	Test Method
NLGI Grade	1	ASTM D217
Worked Penetration (60X)	310–340	ASTM D217
Dropping Point (°C)	>185	ASTM D2265
Base Oil Viscosity @ 40°C (cSt)	100	ASTM D445
Four Ball Weld Load (kg)	315	ASTM D2596
Four Ball Wear (mm)	0.45	ASTM D2266
Timken OK Load (lbs)	40	ASTM D2509
Water Washout, % @ 175°F	<3	ASTM D1264
Rust Test	Pass	ASTM D1743
Color	Dark Gray / Black	Visual
Texture	Smooth / Slightly Tacky	Visual
Corrosion Protection	Pass (No Rust)	ASTM D665, Proc. B
Water Spray Off Test	<10%	ASTM D4049

HEALTH AND SAFETY

When used as intended, this product is not expected to pose any health risks or safety concerns. To minimize exposure, avoid direct skin contact and wear resistant gloves when handling greases. If contact occurs, wash the affected area immediately with soap and water. For comprehensive guidelines on safe handling and detailed product information, please refer to the Material Safety Data Sheet (MSDS) available on our website: <https://lonestargl.com>

EXPLORE THE LONE STAR DIFFERENCE. GET IN TOUCH WITH US TODAY




LET'S WORK TOGETHER

We're more than a supplier—we're a partner in your operation. Whether you need a custom solution, dependable logistics, or technical guidance, we're here for you every step of the way.

 832 858 6909

 contact@lonestargl.com

 www.lonestargl.com

 11717 Garrett Rd
Houston, TX 77044